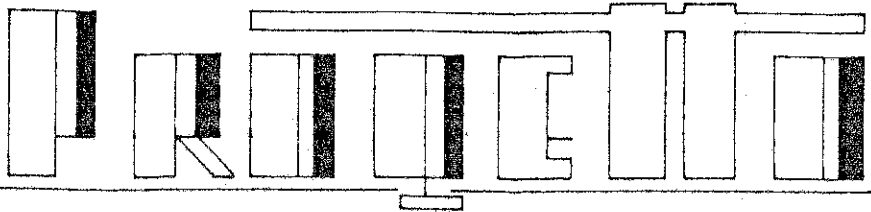




**STUDIO TECNICO F. B.**

DI FLORINI ING. EMER & BONUCCHI GEOM. ORLANDO  
MONTEBONELLO DI PAVULLO (MO)



DI AMPLIAMENTO E DI ADEGUAMENTO  
ALLE NORME DI SICUREZZA  
CAPANNONE AUTOMEZZI COMUNALI.

DITTA

COMUNE SERRAMAZZONI

TAV.

1

PIANTE

SCALA 1:100

IL TECNICO

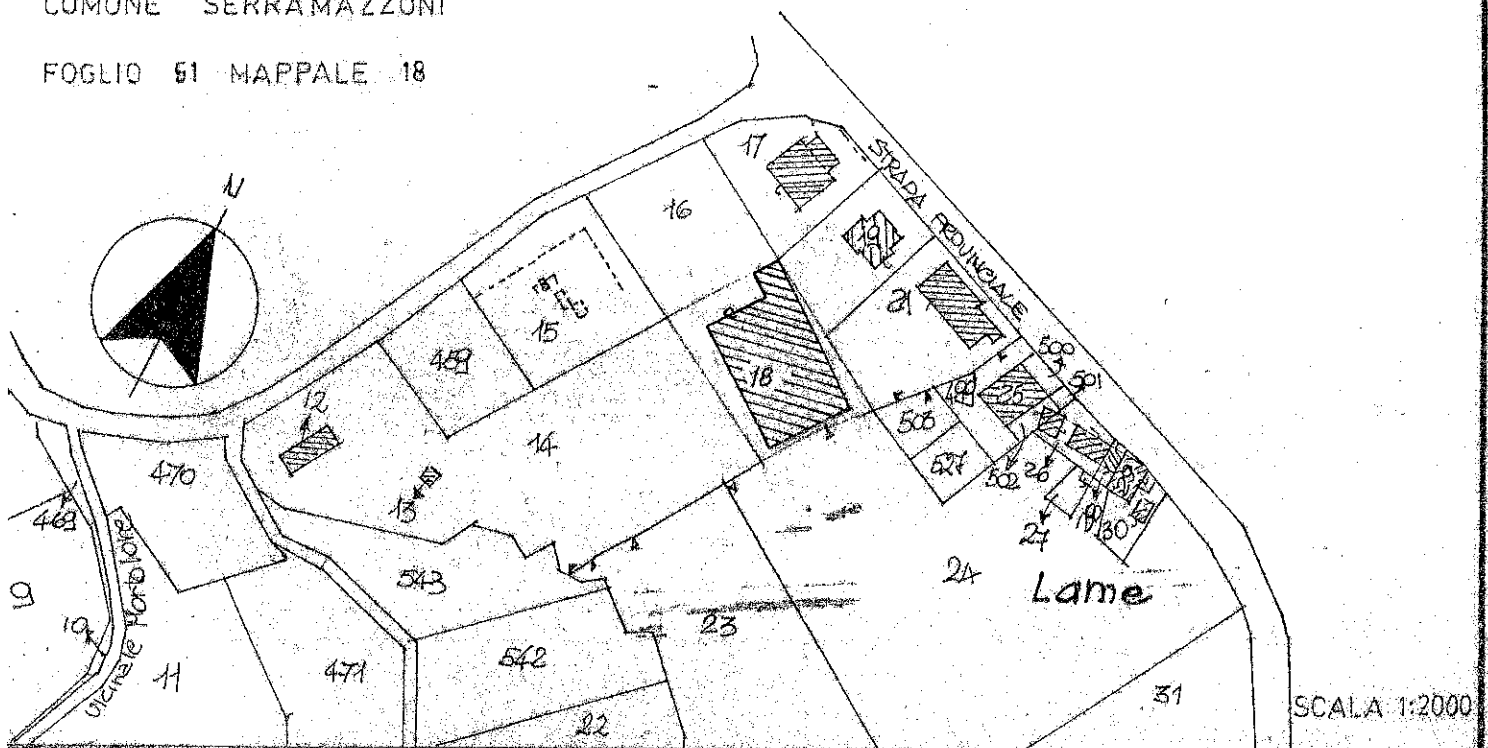


DATA

SETTEMBRE '89

COMUNE SERRAMAZZONI

FOGLIO 51 MAPPALE 18





16

17

19

18

21

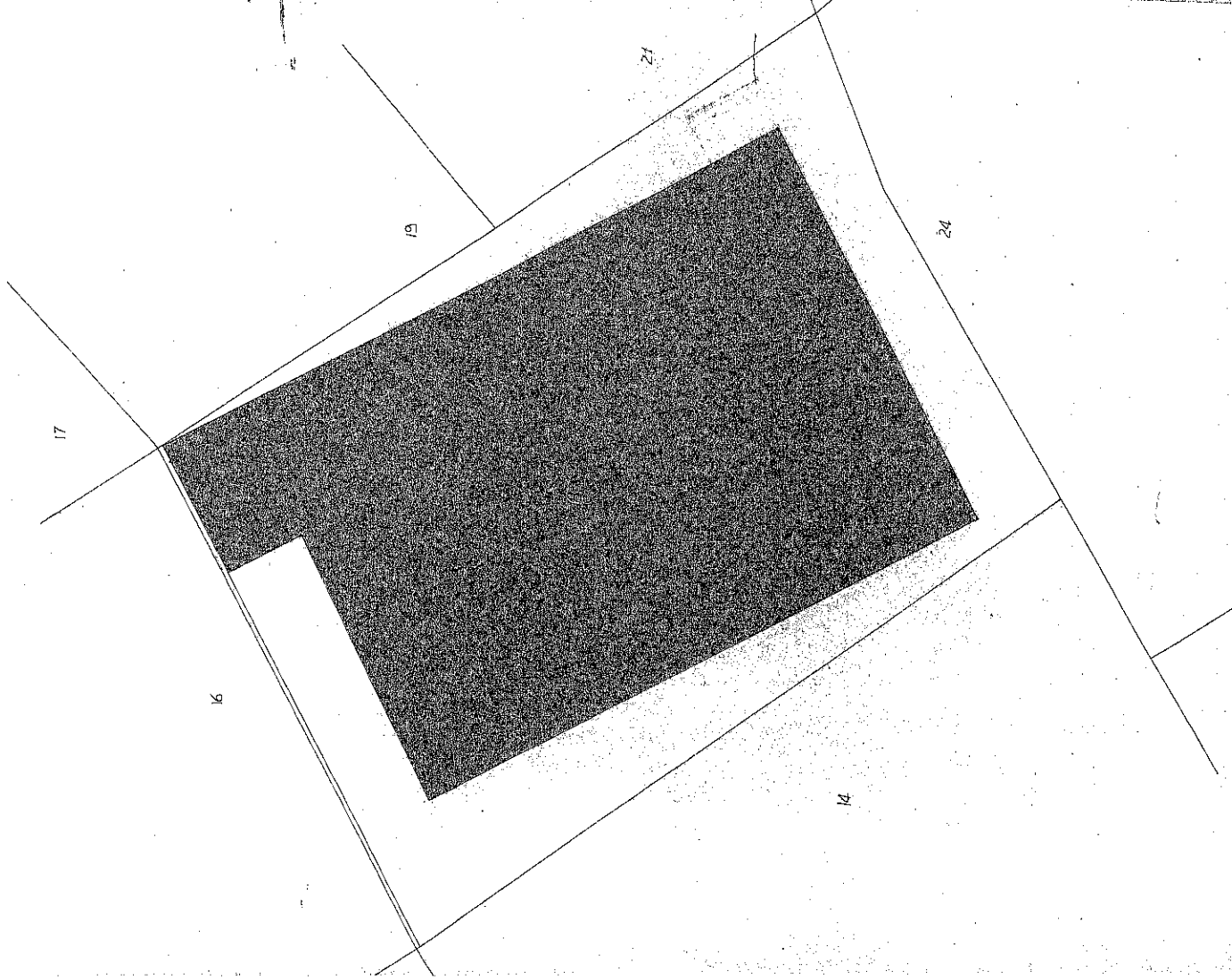
499

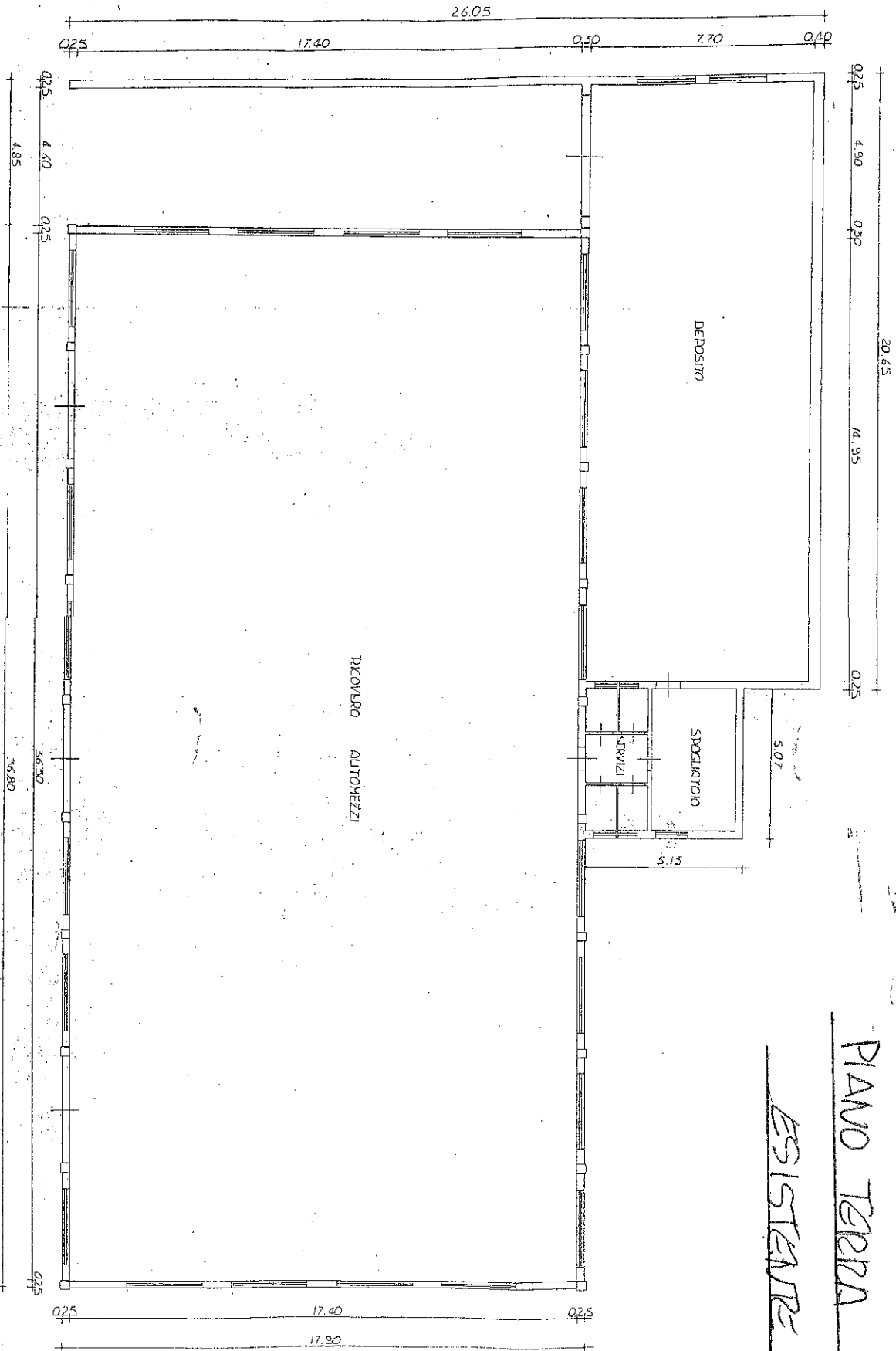
503

24

23

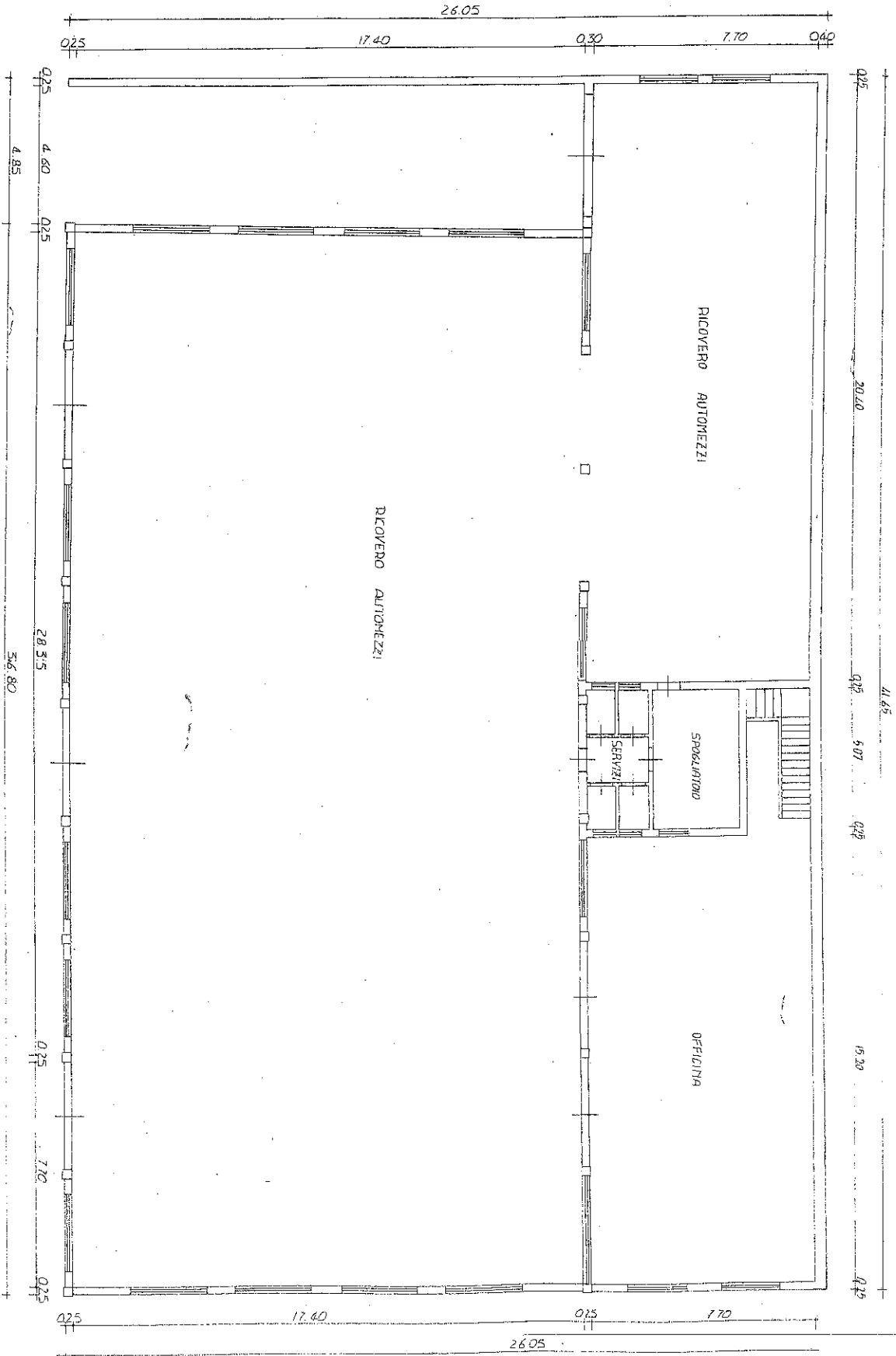
PLANIMETRIA  
SCALA 1:500





PIANO TERRA

ESISTENTE



PIANTA DI PROGETTO